



DemonBuddy User Manual

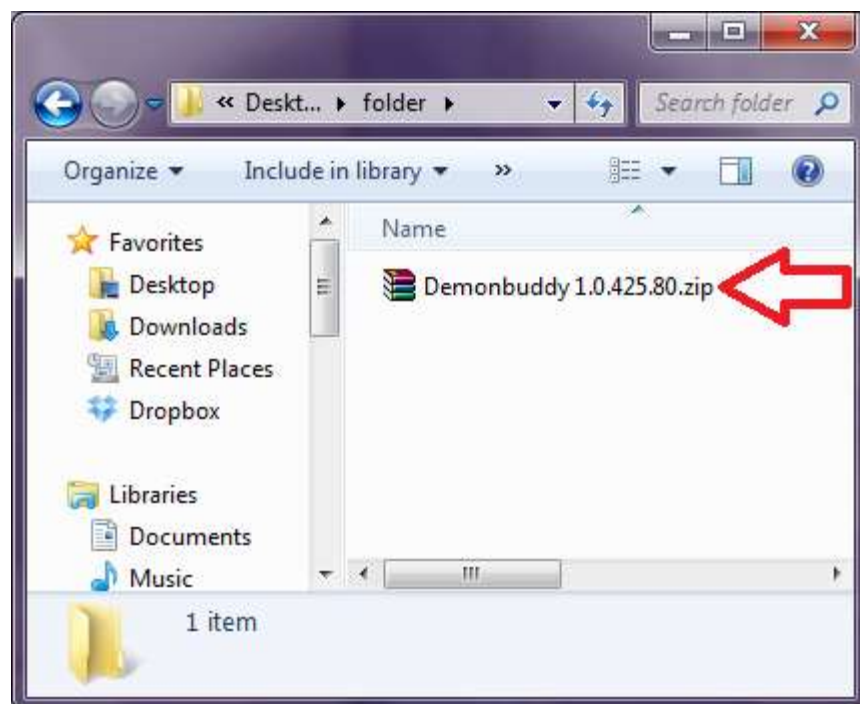
Getting Started

Before we start we need to make sure you have the following

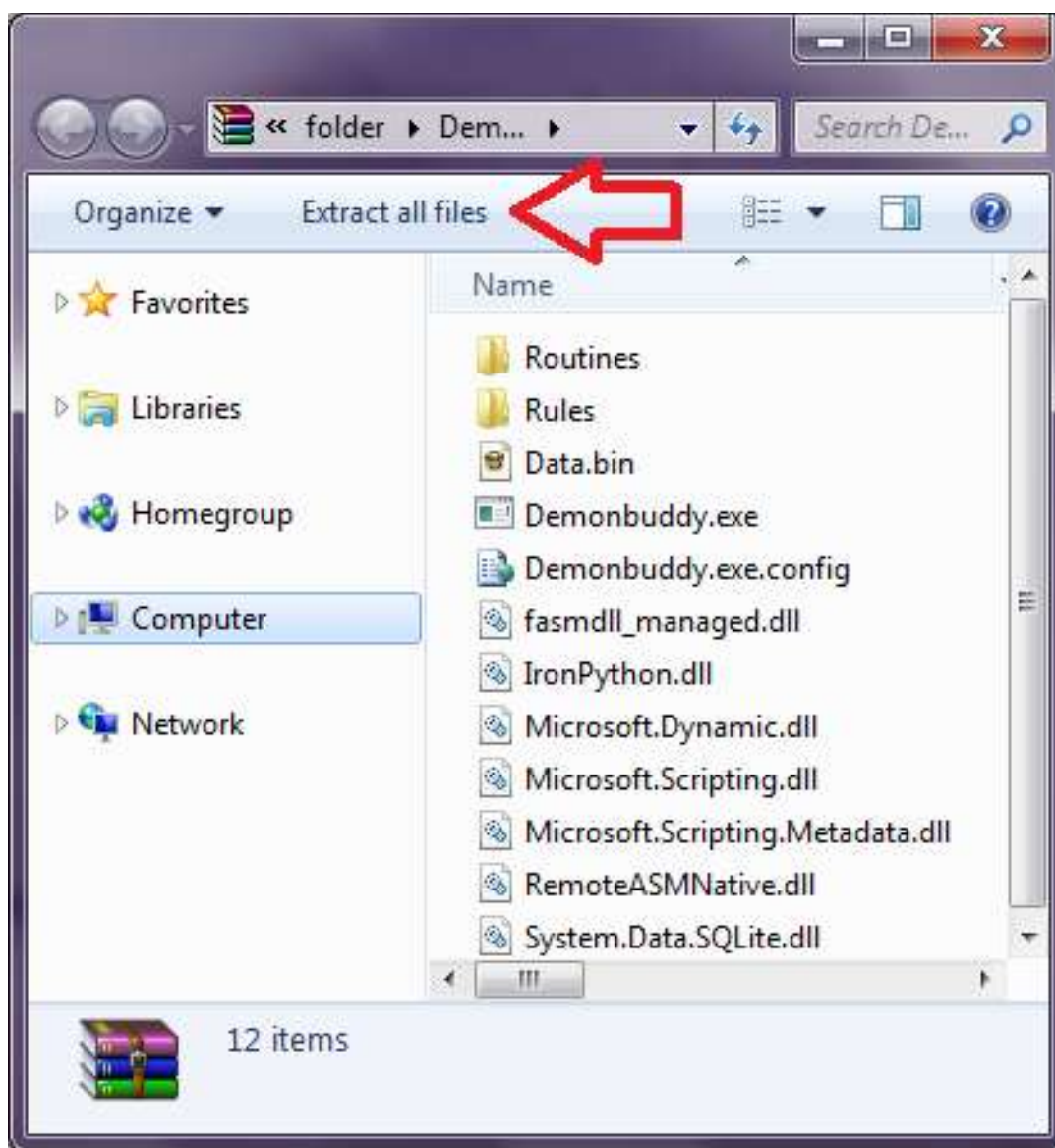
1. Diablo 3 fully installed and updated to connect to live servers.
2. Microsoft .NET Framework 4 - [Can be downloaded here](#)
3. Microsoft Visual C++ 2010 Redistributable Package - [can be downloaded here](#)
4. DemonBuddy Release Package - The Latest Version can always be found at <http://www.thebuddyforum.com/releases/> or at <http://updates.buddywing.com/>

Once you have the following completed, we need to open up the DemonBuddy Release package we got off the release thread at <http://www.thebuddyforum.com/releases/> the package is a ZIP file, we need to extract the contents of the zip file to a new folder.

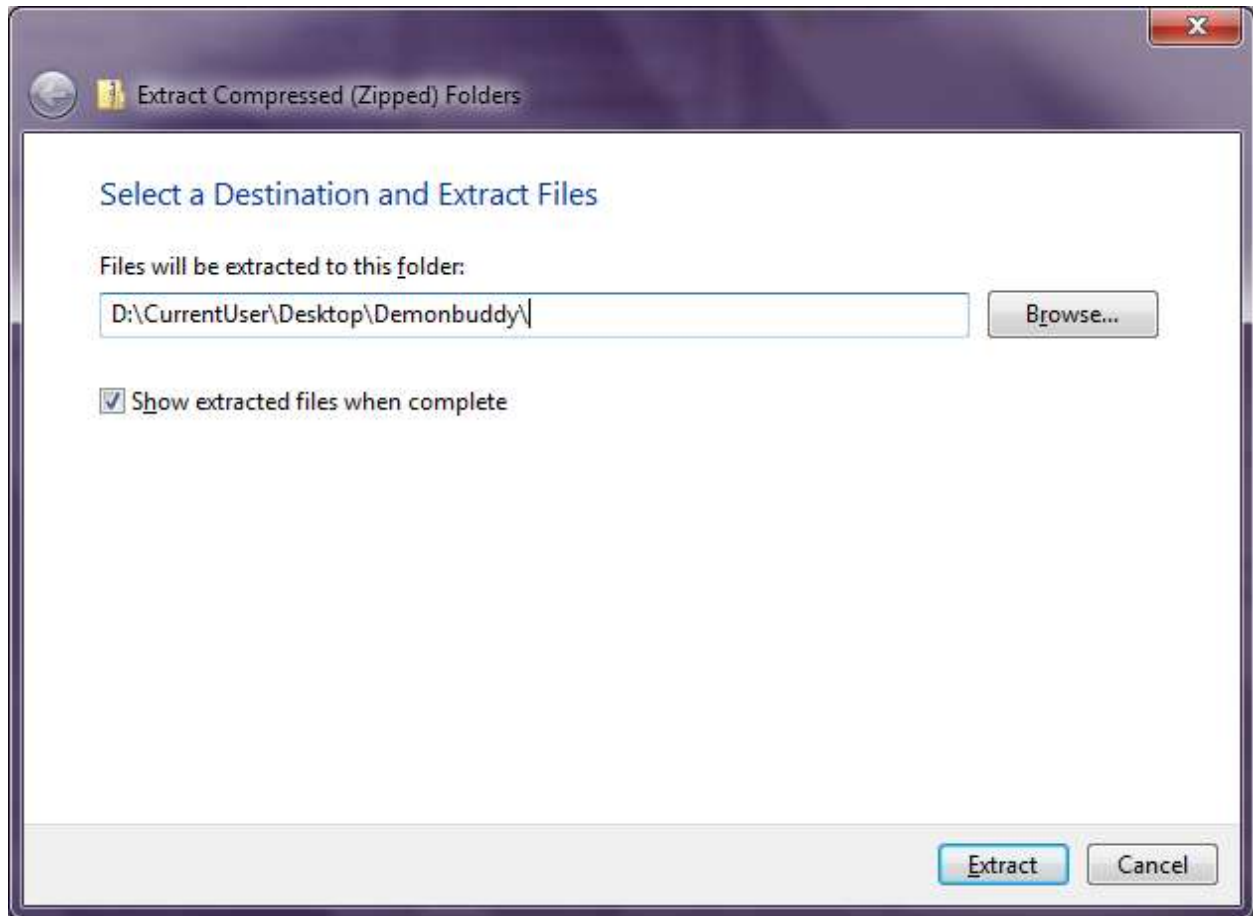
Step 1: Click on your **DemonBuddy.Zip** file you downloaded from the releases section of The Buddy Forums



Step 2: We need to extract the files to a new folder, so click "**Extract all files**"

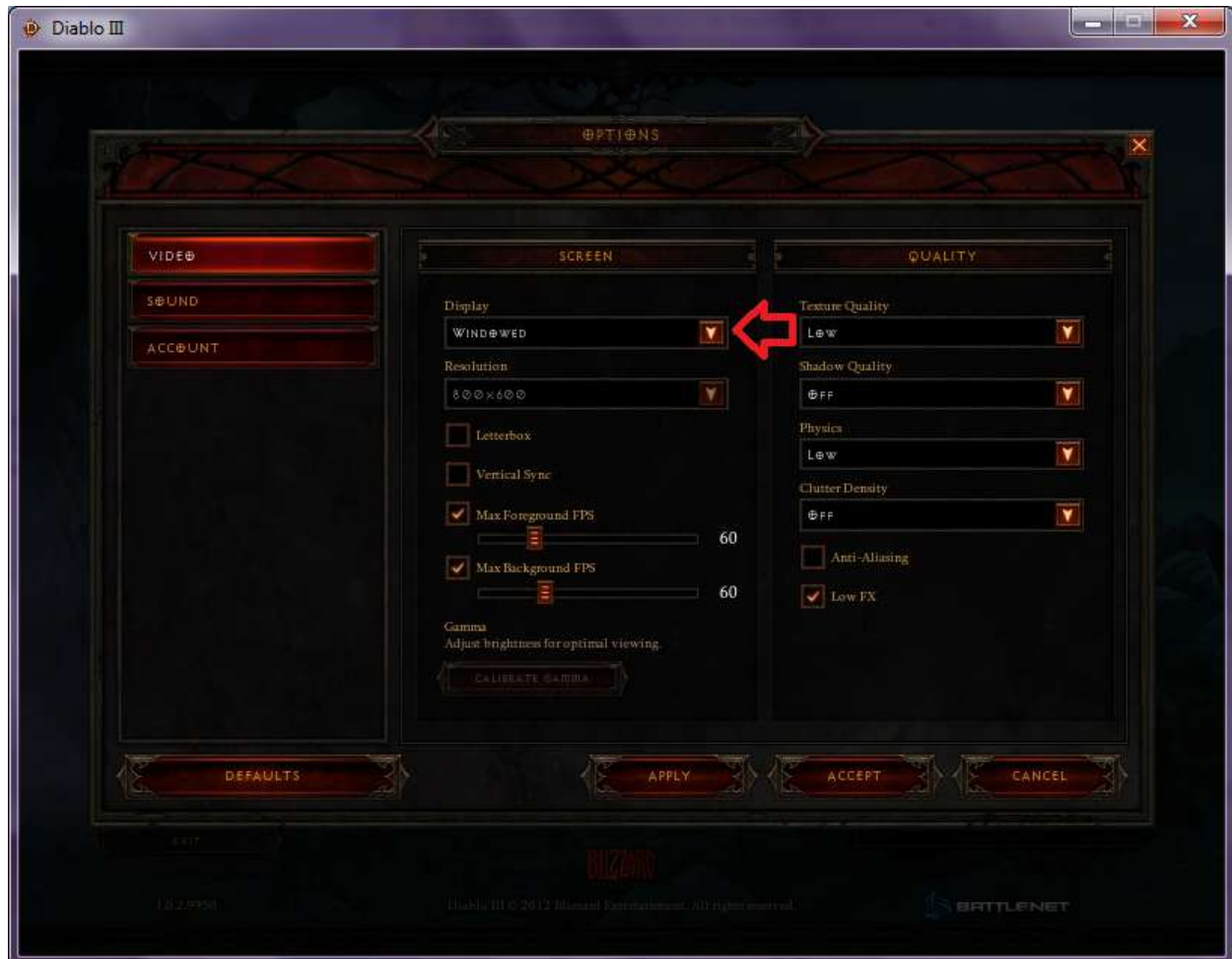


Step 3: We need to tell it where to extract to. I suggest extracting the files to a New Folder on your desktop so you can find it easily, and click Extract to extract the zip file to the specified folder.



Starting Diablo 3

Before Starting DemonBuddy we need to make sure our game is set to Windowed Mode to do this at the Diablo 3 Login Screen go to Options and under Video we need to change Display to Windowed, at this time you may also wish to lower your graphics settings and resolution if you plan on botting in the background or running multiple bots. Once those settings are correct click Accept.

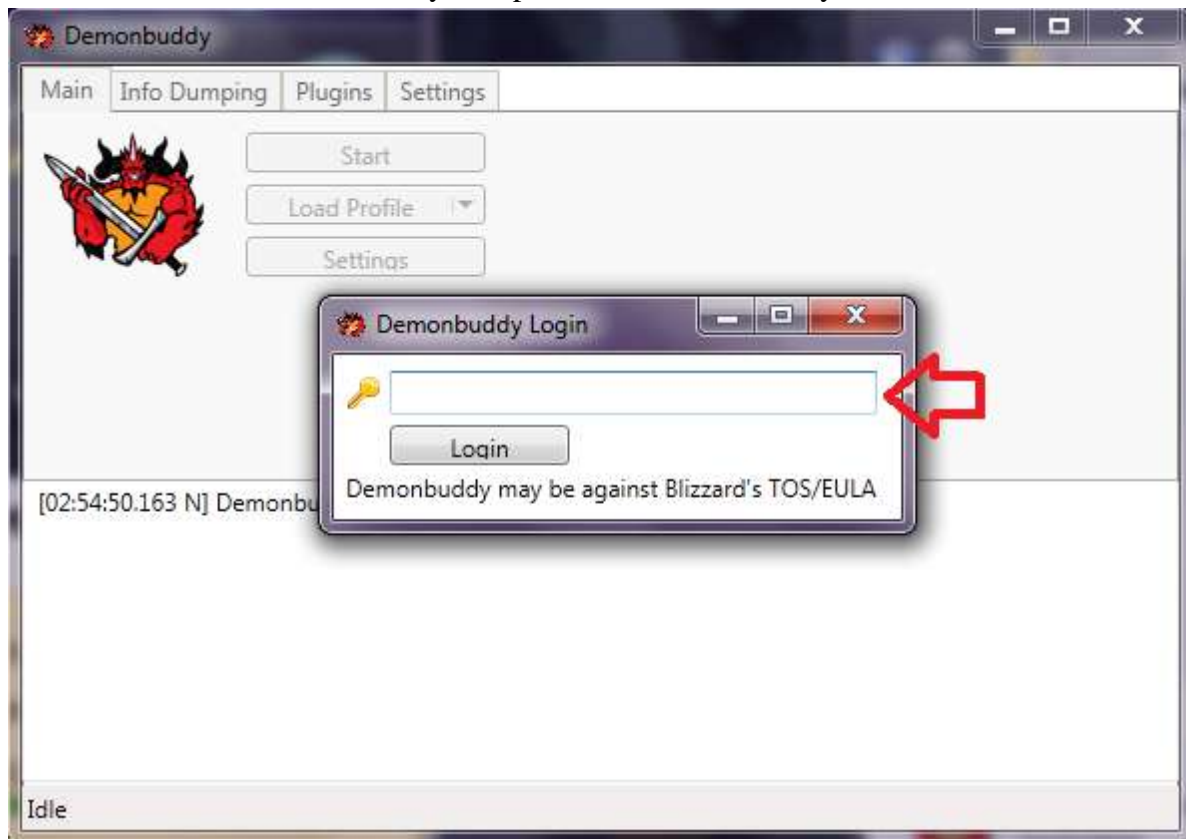


Starting DemonBuddy

Before starting DemonBuddy you need to make sure you are logged into Diablo 3 and have selected the Hero you want to bot. Once that's complete, launch Demonbuddy.exe



Once the Program is started you be asked to Login with your **Key**. Your Key should be a 20 Character Long Alpha Numeric String, that was **E-mailed** to you after you **Purchased DemonBuddy**, If you have your Key, Copy and Paste it Into the Login Box and **Click Login**. If you didn't get your key after buying, then Send an e-mail to support@thebuddyforum.com with your transaction ID. Please check your Spam folder first as it may be in there!



Once you are logged into DemonBuddy the Diablo 3 window will start flashing, this is to show you what Diablo 3 window the bot is attached to. You may have to Right Click and Run As Administrator when launching DemonBuddy if you are having any problems at this point.

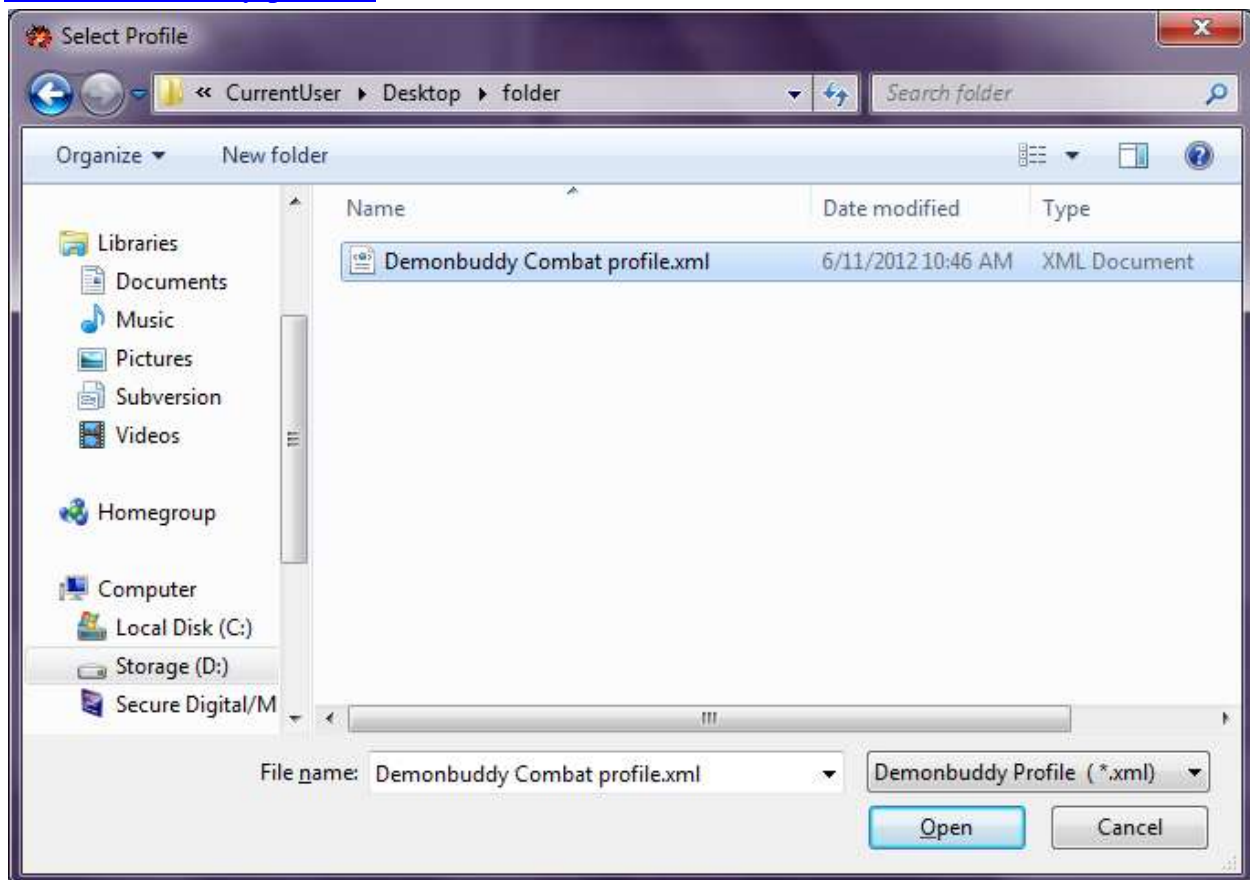
Congratulations, if you made it this far that means you're almost ready to start botting. Next we will go over the buttons you need to know and what they do.



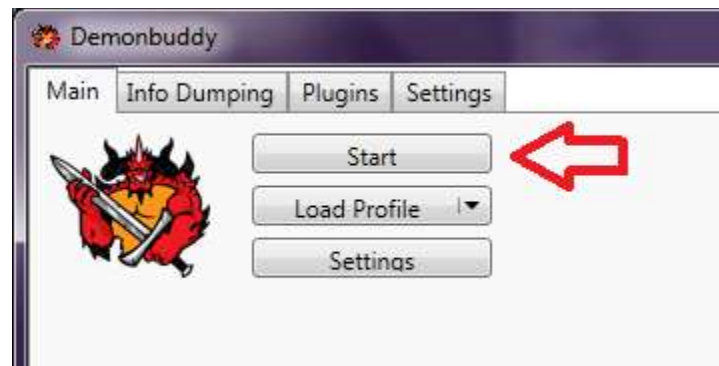
- **Start** - Starts and Stops the bot.
- **Load Profile** - Lets you load a profile from a file or from a web server. you NEED to load a profile in order for the bot to function you can download profiles from <http://www.thebuddyforum.com/demonbuddy-forum/demonbuddy-profiles/>
- **Settings** - Lets you change your Combat Routine if you have more than one installed.
- **Info Dumping** - in this tab you will find tools related to profile development
- **Plugins** - if you have plugins installed you can manage and configure them in this tab
- **Settings** - Contains settings such as Kill Radius, Loot Radius and Repair Durability. it is best to leave these default unless the profile you are running specifically required you to change these settings.

Loading a Profile

To Load a profile Click the Load Profile button once clicked you will see a box like the one below. Browse to where you have downloaded your profile and click open. You can download profiles from The Buddy Forum at <http://www.thebuddyforum.com/demonbuddy-forum/demonbuddy-profiles/>



Once an appropriate profile for your Hero has been loaded, you can start the bot by clicking Start. The bot will complete the tasks scripted in the profile and you are now botting with DemonBuddy..



Having Problems?

Please visit us on the forums at

<http://www.thebuddyforum.com/demonbuddy-forum/>

or send an e-mail to

support@thebuddyforum.com